

Student Card Photos



You can upload a photo for your student card as part of your online enrolment. Uploading a photo means you'll avoid long queues when you collect your student card at the Orientation Festival. Best of all, you'll have more time to enjoy the Festival.

Make sure your photo meets the requirements below. If it doesn't, it will need to be retaken when you collect your card - there could be a wait!

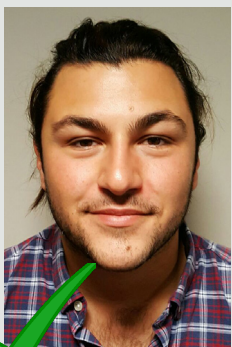
You can change your photo before your card is printed, but not afterwards.

PHOTO REQUIREMENTS

- 190 x 253 pixels in size, high quality colour, and sharply focused. No visible pixel or printer dots.
- Only you can be in the photo. It must be less than 6 months old.
- Take the photo in clear lighting against a neutral background, with natural skin tones, proper exposure with no shadows. No filters or enhancements.
- Face directly to the camera, from the shoulders upwards, with your eyes open and a neutral expression. Avoid 'red eye'.
- Your face should be unobstructed, with no shadows, clothing, hair or sunglasses in the way.
- Glasses should have clear lenses, causing no glare or obstruction to your eyes.



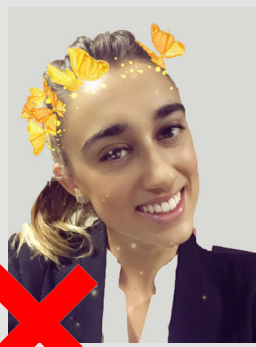
EXAMPLES OF PHOTOS



Face unobstructed, natural expression



No shadows on facial features, no glare on glasses



Unnatural expression, tilted head, filter



Too far away, hat obscuring forehead, shadows on face



UNIVERSITY
OF WOLLONGONG
AUSTRALIA

NEED HELP WITH YOUR PHOTO?

If you have questions please contact us at askuow@uow.edu.au or call us on 1300 ASK UOW

getstarted.uow.edu.au #ThisIsUOW

